



TOWN OF BELMONT COMPREHENSIVE INVENTORY UPDATE

Project Update | June 25, 2024



AGENDA

- 1 | Inventory Update
- 2 | Concord Avenue Options
- 3 | Discussion



The background of the entire slide is a dark gray topographic map. It features intricate white contour lines that form various shapes, including concentric circles, elongated loops, and complex, interconnected patterns. These lines represent elevation changes, with some areas showing very tight, dense lines and others showing more widely spaced lines.

INVENTORY UPDATE

ACTIVITAS



BELMONT HIGH SCHOOL

- New school opened in 2023; included the construction of new natural grass baseball, softball, and multipurpose fields and a turf rugby field
- Tennis courts were removed and were not replaced
- Rink has been demolished; anticipated to reopen in 2025
- Harris Field and track are approaching end of life, showing signs of wear
- JV Field showing increased wear; many patches of bare soil



PREVIOUS RECOMMENDATIONS

- No recommendations were made in 2022.





BURBANK ELEMENTARY SCHOOL

- Some amenities (e.g. benches) have been replaced
- Significant erosion against the turf area
- No change to playground area
- No change to basketball courts



PREVIOUS RECOMMENDATIONS

1

1 - 5 Years

Concrete Pads at Bicycle Rack (ADA)

Concrete Pads at Benches (ADA)

Walkways (ADA)

Mulch Replenishment

Playground Repairs

Bench Replacement

2

5+ Years

New Playground Equipment

Convert to Rubberized Surfacing





BUTLER ELEMENTARY SCHOOL

- Some amenities (e.g. benches) have been replaced
- No change to playground area
- No change to basketball courts



PREVIOUS RECOMMENDATIONS

1

1 - 5 Years

- Rebuild Basketball Courts
- Concrete Pads at Bicycle Rack (ADA)
- Concrete Pads at Benches (ADA)
- Walkways (ADA)
- Playground Resurfacing
- Wooden Garden Fence Repairs





CHENERY UPPER ELEMENTARY SCHOOL

- Belmont is initiating the design process for a campus renovation, to be partially CPC funded - \$1.3 million was approved at 2024 Town Meeting for the first phase
- The basketball court was resurfaced in 2022
- The temporary structure has been removed from the tennis courts
- No change to the playground area
- No change to the softball/multipurpose field

PREVIOUS RECOMMENDATIONS

1

1 - 5 Years

Repaint Basketball Courts

Concrete Pads at Bicycle Rack (ADA)
Concrete Pads at Benches (ADA)
Walkways (ADA)
Mulch Replenishment
Fence Improvements
New Playground Equipment (2-5)
New Playground Equipment (5-12)
New Swingset

2

5+ Years

Convert to Rubberized Surfacing



ACTIVITAS

TOWN OF BELMONT | Comprehensive Inventory Update



GROVE STREET PARK

- Three baseball diamonds and basketball court renovated in 2023-24 (CPC funded); expected to reopen in 2024
- Multi-purpose fields show increased wear; many patches of bare soil
- No change to playground area
- No change to tennis courts



PREVIOUS RECOMMENDATIONS

1

1 - 5 Years

Rebuild Basketball Court

Mulch Replenishment

Playground Swing Repairs

Fence Improvements

2

5+ Years

Convert to Rubberized Surfacing





PAYSON PARK

- Entirely renovated in 2023-24 with new playgrounds and lawn improvements (CPC funded); expected to reopen in 2024



PREVIOUS RECOMMENDATIONS

1

1 - 5 Years

Walkways (ADA)

Convert to Rubberized Surfacing

Playground Repairs

Landscape Improvements





PEQUOSSETTE PARK

- Basketball court renovated in 2023-2024 (CPC funded); expected to reopen in 2024
- Multi-purpose fields show increased wear; many patches of bare soil
- No change to playground and fitness areas
- No change to tennis courts
- No change to baseball field



PREVIOUS RECOMMENDATIONS

1

1 - 5 Years

Resurface Basketball Courts

Resurface Tennis Courts

Concrete Pads at Benches (ADA)

Walkways (ADA)

Mulch Replenishment

Playground Slide Erosion

2

5+ Years

Rebuild Basketball Court

Convert to Rubberized Surfacing



TOWN OF BELMONT | Comprehensive Inventory Update



TOWN FIELD

- Playground and basketball/pickleball courts renovated in 2023 (CPC funded); new parkour course added
- Pickleball was formalized with permanent nets and a hitting wall
- Multi-purpose fields show increased wear; many patches of bare soil
- No change to baseball field



PREVIOUS RECOMMENDATIONS

1

1 - 5 Years

Walkways (ADA)

2

5+ Years

Rebuild Backstop Fence





UNDERWOOD POOL

- No change to playground area



PREVIOUS RECOMMENDATIONS

1

1 - 5 Years

Concrete Pads at Picnic Tables (ADA)

Walkways (ADA)

Mulch Replenishment

Playground Repairs

2

5+ Years

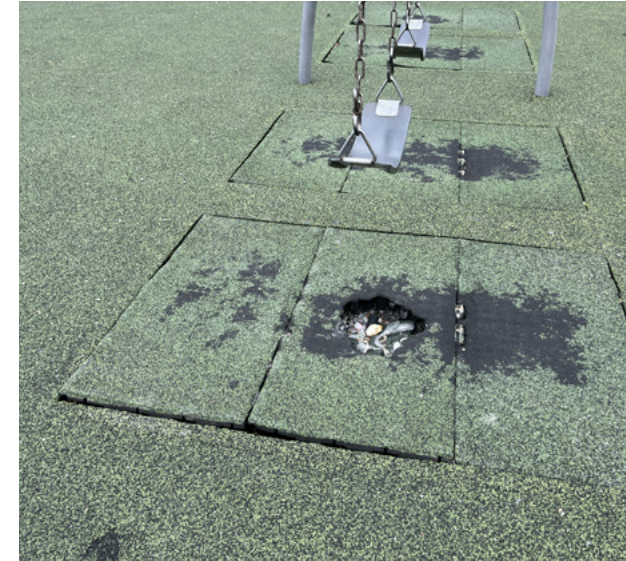
Convert to Rubberized Surfacing





WELLINGTON ELEMENTARY SCHOOL

- Multi-purpose fields show increased wear; many patches of bare soil
- No change to playground area
- No change to basketball courts



PREVIOUS RECOMMENDATIONS

1

1 - 5 Years

Playground Resurfacing

Turf Resurfacing





WINN BROOK ELEMENTARY SCHOOL

- Tennis courts expanded with a fifth court in 2022; all other courts resurfaced
- Multi-purpose fields show increased wear; many patches of bare soil
- No change to playground area
- No change to baseball field
- No change to basketball courts; increased wear to asphalt



PREVIOUS RECOMMENDATIONS

1

1 - 5 Years

Rebuild Basketball Court
Concrete Pads at Picnic Tables (ADA)
Walkways (ADA)
Mulch Replenishment
Playground Repairs

2

5+ Years

Rebuild Backstop Fence
Convert to Rubberized Surfacing



The background of the entire slide is a dark gray topographic map. It features intricate white contour lines that form various shapes, including concentric circles, elongated loops, and complex, interconnected patterns. These lines represent elevation changes across a landscape.

CONCORD AVENUE OPTIONS

ACTIVITAS



OPTION 1

- 1 | 6 Tennis Courts - (3) 2-court batteries
- 2 | Natural Grass Boys Lacrosse/Multipurpose Field - 180'x330' with runout space
- 3 | Natural Grass Softball Field with Skinned Infield - 200' outfield
- 4 | 2 Batting Cages
- 5 | Discus Cage
- 6 | Javelin Runway
- 7 | Resurface Harris Field and Track
- 8 | New Rink





OPTION 2

- 1 | 6 Tennis Courts
- 2 | Natural Grass Boys Lacrosse/Multipurpose Field - 180'x330' with runout space
- 3 | Natural Grass Softball Field with Skinned Infield - 200' outfield
- 4 | 2 Batting Cages
- 5 | Discus Cage
- 6 | Javelin Runway
- 7 | Resurface Harris Field and Track
- 8 | New Rink





OPTION 3

- 1 | 6 Tennis Courts - (1) 4-court battery, (1) 2-court battery
- 2 | Natural Grass Boys Lacrosse/Multipurpose Field - 180'x330' with runout space
- 3 | Natural Grass Softball Field with Skinned Infield - 200' outfield
- 4 | 2 Batting Cages
- 5 | Discus Cage
- 6 | Javelin Runway
- 7 | Resurface Harris Field and Track
- 8 | New Rink



The background of the entire slide is a dark gray topographic map. It features intricate white contour lines that form various shapes, including concentric circles, elongated loops, and complex, interconnected patterns. These lines represent elevation changes, with some areas showing very tight, dense lines and others showing more widely spaced lines.

DISCUSSION

ACTIVITAS